

# Machine Embroider Your Life

## Let's Make Patches!

### Supplies

- 120 x 180 mm Embroidery Hoop
- 11/75 Machine Embroidery Needle
- Water Soluble Stabilizer (enough for 2 layers)
- 4" square of Fusible Interfacing
- 5" square of fabric for background
- Curved Scissors (or other fabric scissors)
- Embroidery Thread(s)
- Cotton Swabs & Water

### Fabric Preparation

Fuse the square of fusible interfacing to the back of the square of background fabric following the manufacturer's instructions. Be sure to choose a weight of interfacing suited to the background fabric in order to create a stiff fabric.

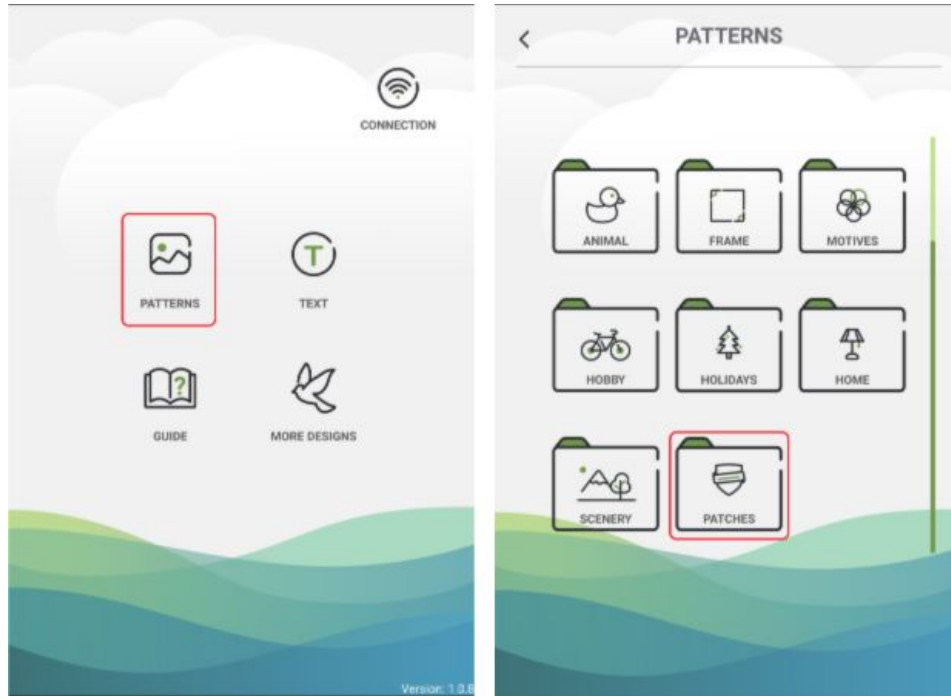
### Hooping

Cut two pieces of water soluble stabilizer large enough for the embroidery hoop. Lay both pieces over the outer hoop and then press in the inner hoop over the stabilizer. Close the clamp to secure. Install the hoop in the embroidery machine.

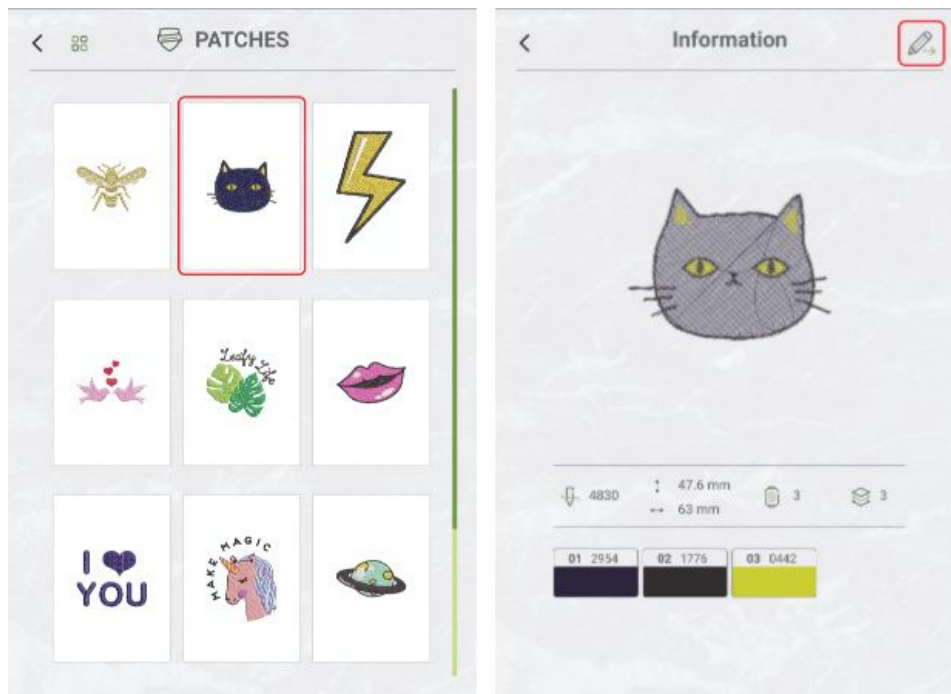
### Design

*If you're following along on a machine other than the Sparrow X, arrange the designs following your machine's editing software.*

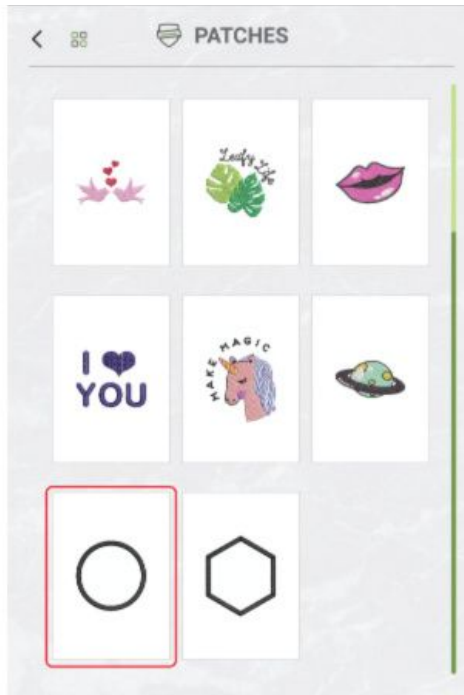
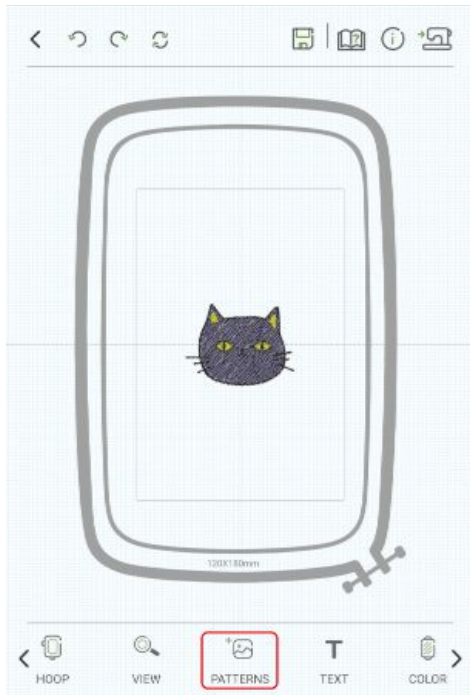
Open the EverSewn Pro app on your smart device.



Select the Pattern tab, then the Patches tab.

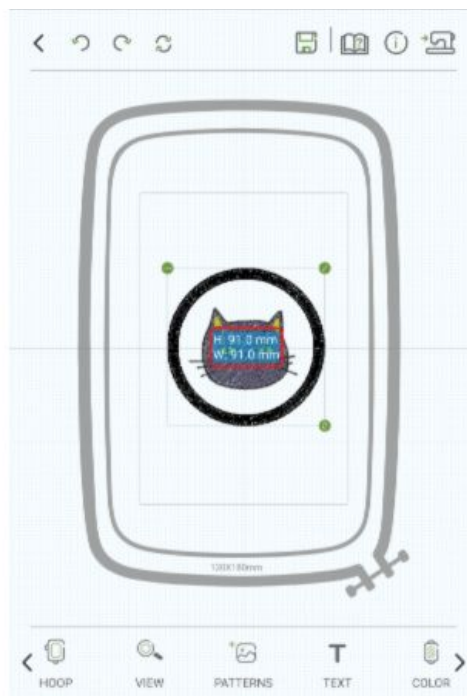
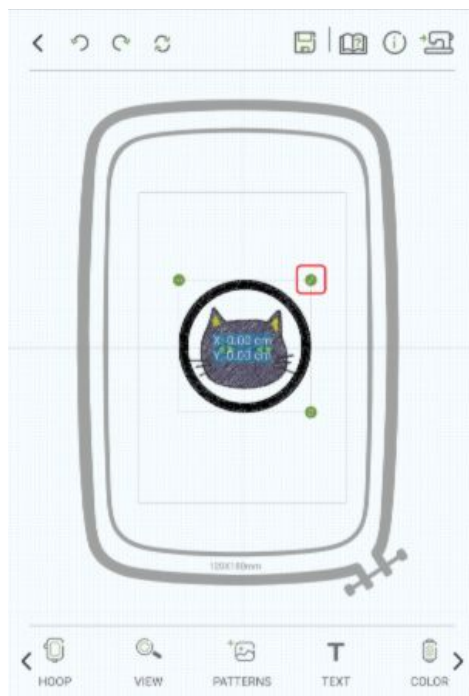


Select the patch you want to make. The app takes you to an information page. Click the pencil button in the upper right corner to send the pattern to the editing screen.



Click on the Patterns button in the bottom sliding menu.

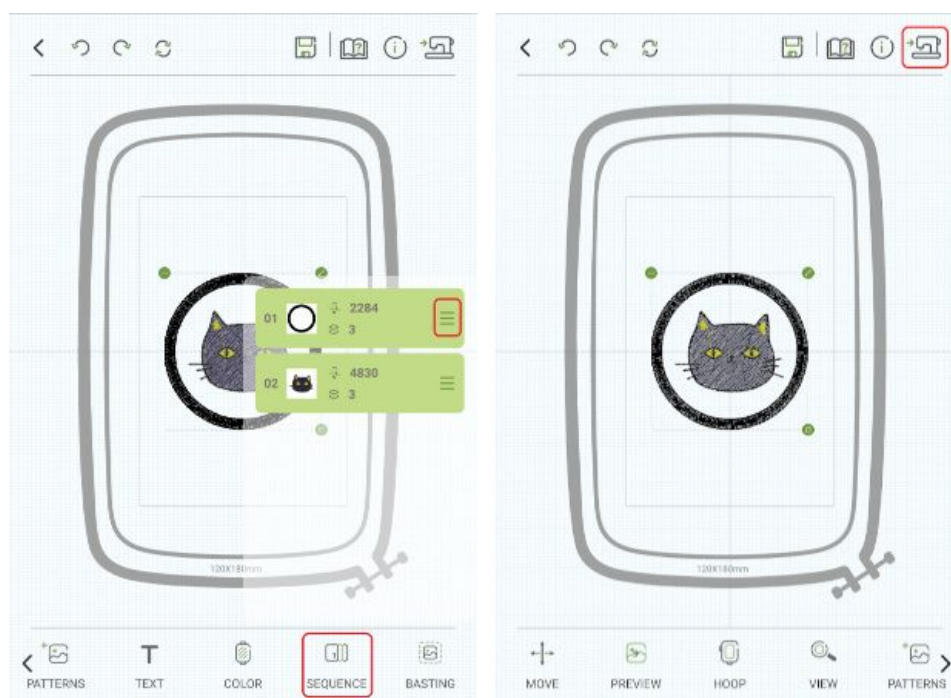
Click on the Patches tab and select a patch frame. Click the pencil button to send the frame to the editing screen.



Select the frame, press and drag the arrow button on the right corner of the design to enlarge. Enlarge the frame to fit comfortably around the patch design. For the cat, try about 90 mm.



Editing the frame moves it from the center, so to recenter, click the Move button in the bottom sliding menu. Click the centering button, it looks like four arrows pointing towards each other. This centers the selected design.



Click the Sequence button in the bottom sliding menu. The frame should be the first part of the design stitched out. Press and drag the three parallel lines to the right side of the green bar to move the item. Once the frame is in the first position,

the design is ready to send to the machine. Click the button in the upper right corner that looks like a sewing machine with an arrow pointing at it. This sends the design to the machine for stitching.

## Stitchout

Thread the embroidery thread for the frame in the machine. Press the start button on the front of the machine to begin the placement stitch. Once the placement stitch is done, place the already prepared background fabric square over the placement stitch area. Press the start button to begin the tacking stitch part of the frame design.

Once the tacking stitch is done, remove the hoop from the machine. Cut out the background fabric around the outside of the tacking stitch. Curved scissors can really help trim close to the tacking stitch without cutting the stabilizer. It's okay if a few of the tacking stitches are cut because they'll be sewn over again.

After trimming the background fabric, reinstall the embroidery hoop and continue the stitchout. Follow the prompts on the app for thread color changes until the patch is finished stitching.

## Final Touches

After stitching out the patch, remove the hoop from the machine and the patch/stabilizer from the hoop.

Lay the patch flat on an area to work, and note that it's helpful to put down some scrap paper or cloth to catch the mess.

Dip the cotton swabs in water and wet around the edge of the patch to dissolve the water soluble stabilizer. Once the stabilizer is dissolved, lift the patch away from the remaining stabilizer and smooth any rough edges with a fingertip.