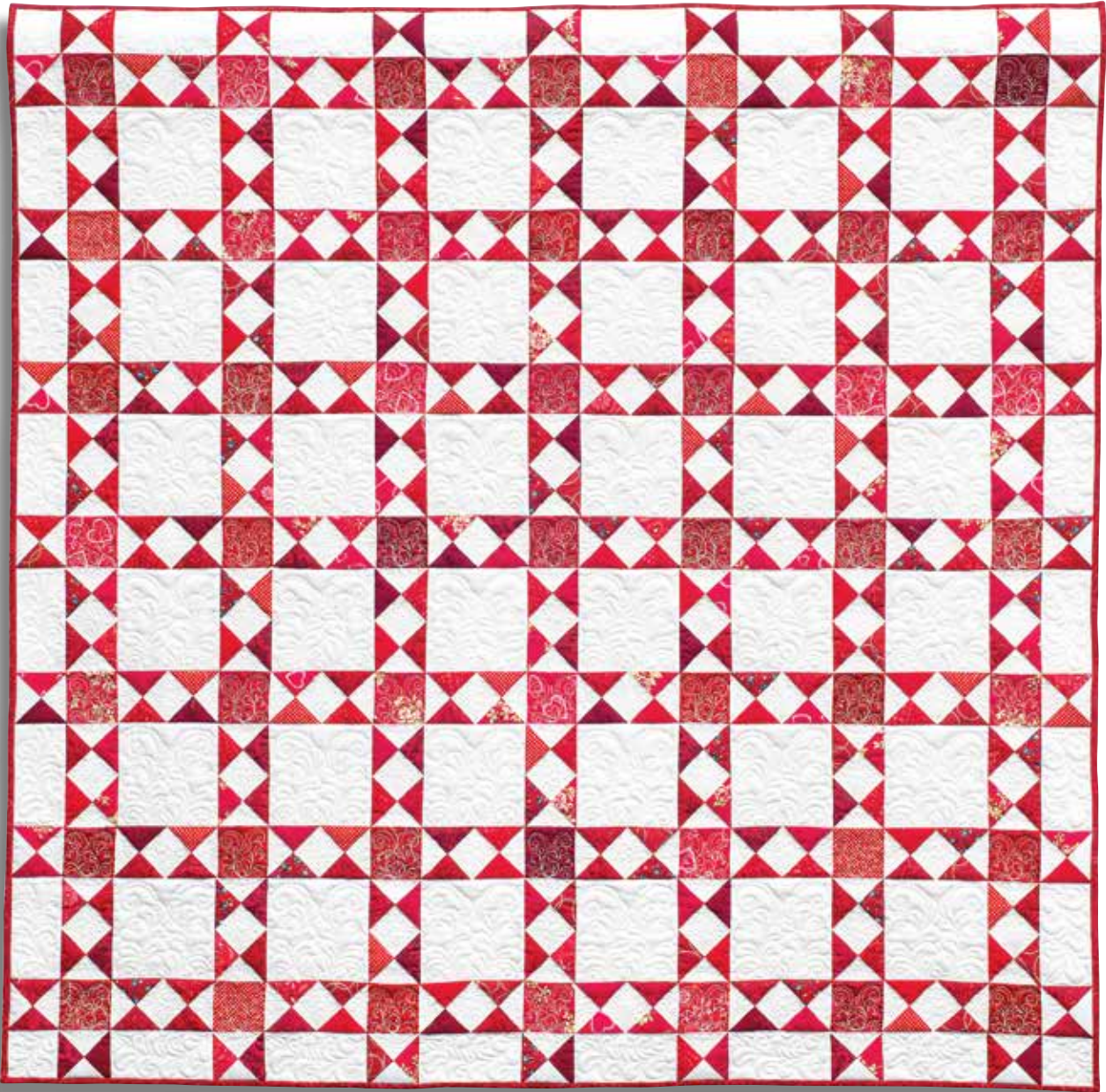


Eight-Pointed Star



Made by the author, quilted by Sue Patten, Simcoe, Ontario, Canada

Finished size: 45" x 45"

"Finished block size" is misleading because this quilt wasn't constructed in blocks. However, if it were, they'd be $6\frac{3}{8}$ " x $6\frac{3}{8}$ ".

When I first looked at this antique quilt, I did not see the Eight-Pointed Star block.



Because the blocks were set edge-to-edge with no sashing and with a button sewn at the junction of the blocks (an option I chose not to repeat), the motifs ran into each other. I saw large white squares surrounded by smaller quarter-square triangles (QSTs).



Maybe it was just a perception thing on my part. (I have yet to see the bat in the Batman logo. I see a wide-open mouth with oddly crooked teeth!)

Maybe it was the influence of Cathy Busch's strategy of looking at the big picture to figure out how to simplify blocks (detailed in her book *Newfangled Piecing: Faster & Easier*; AQS 2013). One of the advantages of being an editor for AQS is that I am constantly being exposed to our authors' new and clever techniques.

Whatever the reason, I simplified the construction by making this quilt as I saw it.

Yardage Requirements

This is another great stash-buster. Yardage assumes one red and that you'll use Thangles to make the HSTs. You'll need a bit more total yardage if you use a variety of reds and/or if you use a different HSTs method.

2¼ yards white
 1⅞ yards red (includes ⅜ yard binding)
 3 yards backing
 53" x 53" batting

Additional Supplies

1 packet 2.5" (finished) Thangles (optional)



Cutting Instructions

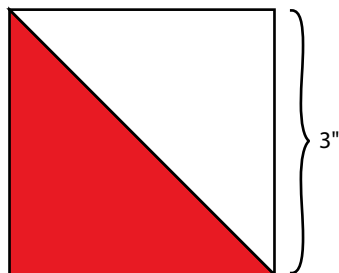
Strip Width cut selvage-to-selvage	2 ⁵ / ₈ "	3"	4 ³ / ₄ "
Red strips	4 Cut into 49 squares 2 ⁵ / ₈ " x 2 ⁵ / ₈ ".	13	0
White strips	1 Cut into 4 squares 2 ⁵ / ₈ " x 2 ⁵ / ₈ ". 3 Cut into 24 rectangles 2 ⁵ / ₈ " x 4 ³ / ₄ ". (total 4)	13	5 Cut into 36 squares 4 ³ / ₄ " x 4 ³ / ₄ ".

Use the remaining red fabric to cut a minimum of 190" of 2¹/₄" bias binding strips OR 5 strips cut selvage-to-selvage. Allow an additional 2¹/₄" for each seam. Join with 45-degree seams. Trim to 1/4", and press the seams open. Fold the binding in half lengthwise, wrong sides together, and press. Roll up and set aside until the final step.

Sewing Instructions

I wanted the different red fabrics distributed "randomly" over the quilt top, which takes some planning. When making the quarter-square triangles (QSTs) using HSTs, I made sure that my pairs of HSTs had different reds. Then, as I was laying out the units, I paid attention to the placement of the various fabrics. I only had to make sure that the same fabric wasn't touching another matching piece to ensue the look I was going for.

Cut the 3" red and 3" white strips into fourths for 52 strips 3" x 10". Use 49 pairs of strips to make the 196 – 3" x 3" (unfinished) HSTs, following the Thangles instructions.

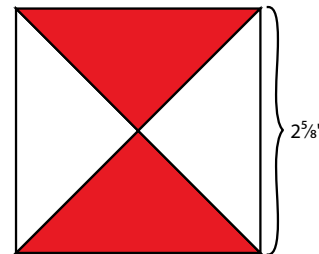


Make 196 HSTs.

Use the HSTs to make 196 – 2⁵/₈" x 2⁵/₈" (unfinished) QSTs by drawing a diagonal line on the back of one HST. Place 2 HSTs right sides together with the white background opposite the reds. Nestle the seam allowances and align the corners. Sew a 1/4" seam on both sides of the drawn line. Cut on the drawn line. Press open.

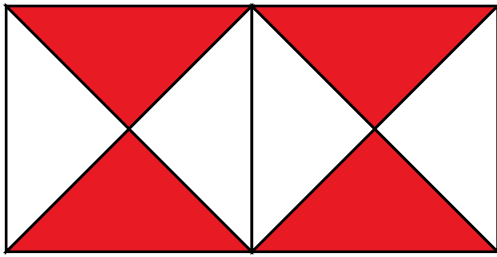
Piecing Hint:

These units can be chain pieced. I found doing about a dozen at a time kept things interesting.



Make 196 QSTs.

Set aside 28 QSTs. Join the remaining 168 QSTs into 84 QST pairs, paying attention to the orientation of the QSTs.



Make 84 QST pairs.

Lay out the QSTs, $2\frac{5}{8}$ " x $2\frac{5}{8}$ " red squares, $4\frac{3}{4}$ " x $4\frac{3}{4}$ " white squares, and $2\frac{5}{8}$ " x $4\frac{3}{4}$ " white rectangles according to the quilt assembly diagram below.

Join the units into rows. Press the seam allowances toward the squares and rectangles.

Join the rows. Press the seams toward the white squares and rectangles.

Piecing Hint:

I'm not a big fan of pinning, so when I joined the units into rows, I relied on my stiletto to keep the edges aligned. Then I tried to do the same when sewing the rows together, but that didn't work as well as I hoped. I realized I was spending more time taking out sections and redoing them to get the points to match than pinning in the first place would have taken. So the later rows were pinned.

Quilting notes from

Sue Patten

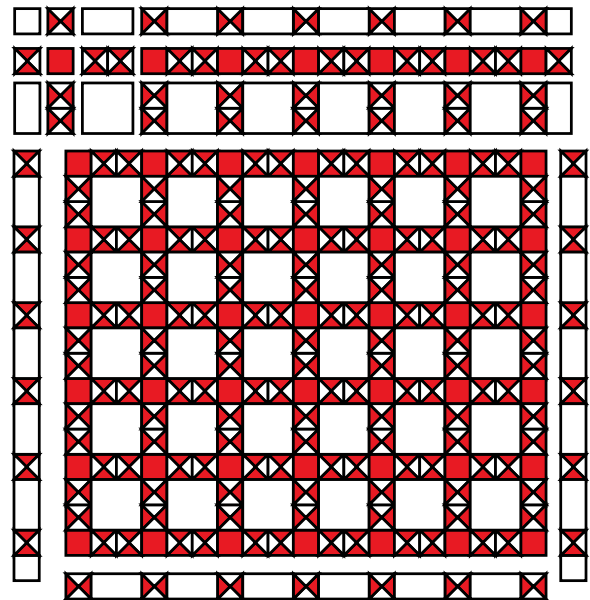
I used two layers of low-loft wool batting and Superior So Fine! thread so I could get good detailing in the "stipplish" areas. Rather than choosing a white thread, I decided to use an off-white #402 Pearl so the thread would show the quilting better.

Finishing

Layer the quilt top, batting, and backing and prepare for your choice of quilting method.



Quilt as desired. Trim the excess backing and batting. Machine stitch the binding to the front of the quilt. Turn to the back and hand stitch in place. Add a label and sleeve.



Quilt assembly