

# WAVY

by Pauline Ineson

# Windows Bag



**T**he class I teach on making this stylish bag, which has a manipulated inset, has been very popular with my students, who say they receive many compliments when using it. A zipper placket along the top gives it a professional look and keeps the bag contents secure. It's not too early to start making these as Christmas gifts!

**Finished bag size: 12" x 12" x 3½"**

### Fabric & materials

For the wavy inset panel:

- Background – 1 piece, 10" x 11"
- Two contrasting fabrics for the wavy tucks – 1 strip of each, 9" x 28"

For the bag (medium weight cotton – ⅞ yard):

- Straps – 2 pieces 3" x 30"
- Back – 1 piece 13" x 14¾"
- Front sides – 2 strips, 2½" x 11"
- Front top – 1 strip, 2" x 13"
- Front bottom – 1 strip, 3¾" x 13"
- Side panels – 2 strips 4½" x 12"
- Zipper plackets – 2 strips 3½" x 13"
- Zipper placket facings – 2 pieces 2½" x 13"

For the bag lining (quilting weight cotton – ½ yard):

- Front/back/base – 1 piece 13" x 27"
- Sides – 2 strips 4½" x 12"

Heavyweight interfacing :

- for the inset panel – 1 piece, 10" x 11"
- for straps – 2 pieces, 1" x 30"

### Tools & supplies

- Long, clear ruler with 45° line
- Air-erasable fabric marking pen
- Thick cardboard – 1 piece 3¼" x 11¾" for bag base
- 14" long separating zipper
- Thread to match your fabrics
- Zipper foot

WAVY WINDOWS BAG, 12" x 12" x 3½", by Pauline Ineson

- Edge joining or stitch-in-the ditch machine foot (optional)

### Making the inset

Place the two strips of contrasting wavy tuck fabrics right-sides together with the lighter fabric on top. Position the ruler with the 45° line along the top of the fabrics and the edge running through the corner. Using an air-erasable marking pen, draw a line along the ruler edge. Draw a second line 1¼" from the first and then another ¼" from the second (fig. 1). Repeat seven times.

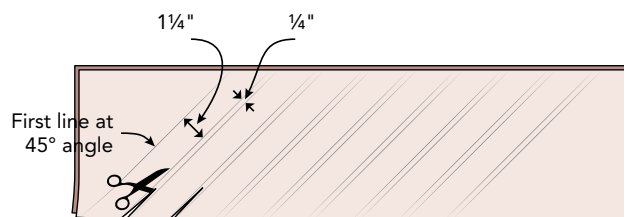


Fig. 1

Stitch on the lines using a short and narrow (almost straight) zigzag. The stitches will stretch a little, making it easier to fold back the finished edge for the wavy tucks. Cut through all layers in the narrow spaces between the lines that are ¼" apart. Trim excess ⅛" from the first line. Turn a strip right-side out. Press with the seam in the middle. Trim to 11" long. Make 8.

Lay the inset background right-side up over the interfacing. Following figure 2, draw a line ½" from each 11" edge. Pin the turned strips, seam-side down, across the background with the outside edge of the first and last at the drawn lines. Machine baste the strips to the background along the top and bottom.

Using an air-erasable marker, draw lines on the strips ½" from the top and bottom edges. Tack the strips to each other and the background on the drawn line. To do this, set your zigzag to length 0 and width about ⅜". Make 3 stitches across the edges of adja-

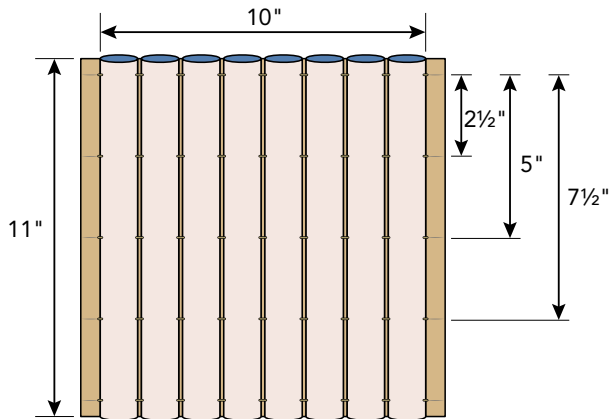


Fig. 2

cent strips on the drawn lines. Repeat to tack the outer edges of the first and last strips to the background.

Mark lines  $2\frac{1}{2}$ " , 5" , and  $7\frac{1}{2}$ " from the top drawn line. Tack the strips to each other and the background along the drawn lines.

Bend back the edges of the strips between the tack stitches and tack the folded edges together midway between the previous stitches (fig. 3).

### Making the bag

*Note: All seams are  $\frac{1}{2}$ " and pieces are sewn right-sides together unless otherwise stated.*

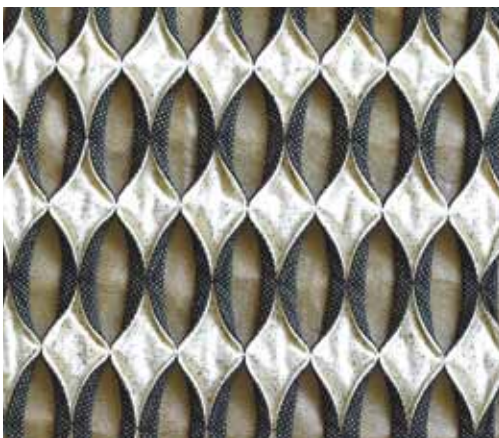


Fig. 3

To complete the bag front, sew the bag front side strips to the sides of the inset. Sew the front top and bottom strips to the inset.

Sew the bag back to the bag front along the bottom edge. Press the seam allowances open. Topstitch  $\frac{1}{4}$ " from the seam on each side.

With wrong sides together, fold the bag front  $1\frac{3}{4}$ " from the bottom seam. Press. Repeat folding and pressing for the bag back (fig. 4). Topstitch very close to the folds. This forms the base of the bag. *Tip: If you have an edge-joining or stitch-in-the-ditch foot, move the needle a little to the left and guide the edge of the fold along the foot center guide. You will sew a perfectly straight line close to the edge.*

Turn  $\frac{1}{2}$ " to the wrong side at the top (short edge) of a bag side panel. Press. Center the opposite edge of the side panel over one side of the seam at the base of

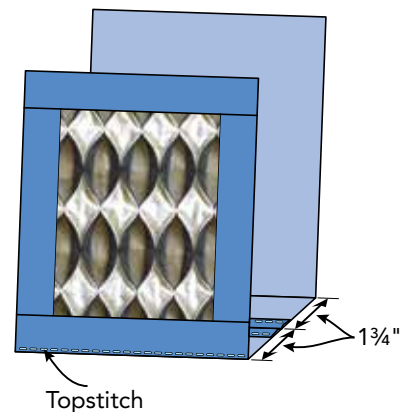


Fig. 4

the bag (fig. 5). Stitch, starting and ending  $\frac{1}{2}$ " from the edge of the strip. Clip the bag front and back to the stitching. Repeat for the other side panel.

Mark each side edge of the bag front and back  $1\frac{1}{2}$ " from the top. Pin the side panels to the bag, pivoting at the clip at the bottom. The fold on the side panels should line up with the marks  $1\frac{1}{2}$ " from the top of the bag. Stitch. Turn right-side out and press. With the bag folded on the seams, topstitch around the side panels.

On the wrong side of a strap piece, mark a line 1" from one long edge. Fold the closest raw edge to the line, wrong-sides together. Press. Still working from

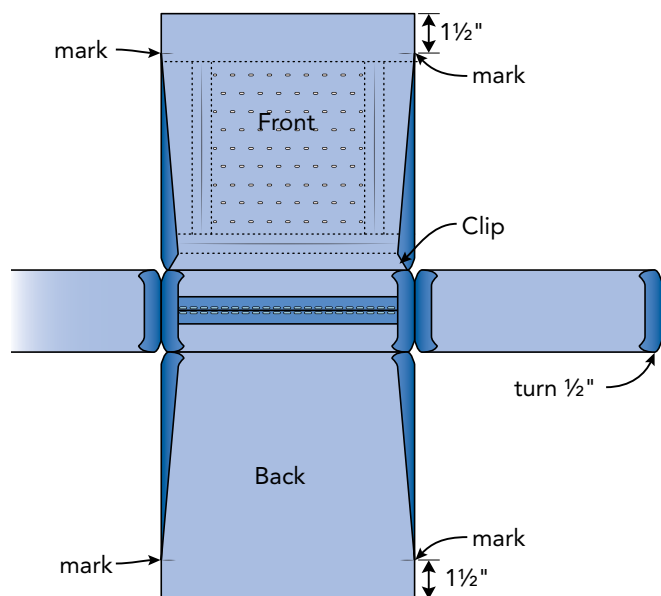


Fig. 5

the wrong side of the strap, place a strap interfacing strip down the center. Turn the long raw edge over the interfacing and then bring the folded edge over to cover the raw edge. Pin. The strip should be 1" wide. From the right side, sew a decorative stitch down the center to secure. Make 2 straps.

Baste the ends of one strap to the right side of the bag front, 3" from each side. Repeat for the back strap.

### Inserting the zipper

At the short ends of the zipper plackets and the zipper placket facings, fold over 1/2" to the wrong side. Press. Separate the zipper into 2 pieces. Leave the zipper pull at the bottom of the zipper. Following figure 6, pin the zipper tape between a placket and zipper placket facing, right-sides together and with the right side of the zipper facing the right side of the placket. The raw edges should be even with the edge of the tape. The bottom end of the zipper will extend beyond the placket.

Using a zipper foot, stitch 1/2" from the edges. Turn the facing and placket to the right side and topstitch through all layers close to the zipper teeth. Turn the zipper tapes at the top end of the zipper between the facing and placket. Topstitch the folded side edges of the placket and facing together on each end. Repeat for the other zipper and placket pieces.

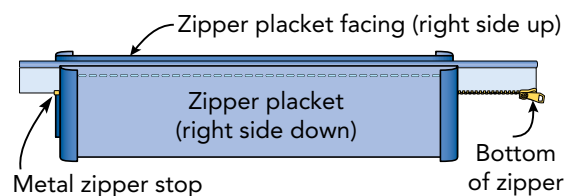


Fig. 6



WAVY WINDOWS VARIATION

Center and pin a zipper placket to the bag front, right-sides together. There will be  $\frac{1}{2}$ " seam allowance extending at each end. Stitch. Fold the extra  $\frac{1}{2}$ " over to the inside and topstitch. Repeat with the second placket on the bag back. Place the cardboard base inside the bag at the bottom.

### **Lining the bag**

Fold the lining in half, short side to short side and right-sides together. Crease. Draw lines on each side  $1\frac{3}{4}$ " from the crease. Fold the lining on the drawn lines right-sides together. Press. Topstitch along the folds. This forms the base of the lining.

At the top (short edge) of a lining side piece, turn over  $\frac{1}{2}$ " to the wrong side. Center the bottom edge between the topstitching on the lining. Stitch starting and ending  $\frac{1}{2}$ " from the edge of the side piece. Repeat for the other side piece.

Clip the lining to the stitching. Pin and sew the lining side seams as you did the bag side seams. The top folded edges of the side pieces should end 1" from top edge of the bag front and back.

Place the lining inside the bag, wrong-sides together. Pin the top folded edges of the lining and bag sides together. Topstitch. Align the lining raw edge to the front and back raw edges. Baste.

On the purse back, fold the zipper placket against the top of the bag, wrong-sides together along the seam that encases the straps. Stitch 1" from the top of the bag back through all layers to encase the lining. Repeat for the bag front.

*Adapted with permission from How to Create an Heirloom Quilt by Pauline Ineson. (David & Charles, an imprint of F&W Media International, 2010).*